

HONDA

INSTALLATION INSTRUCTIONS

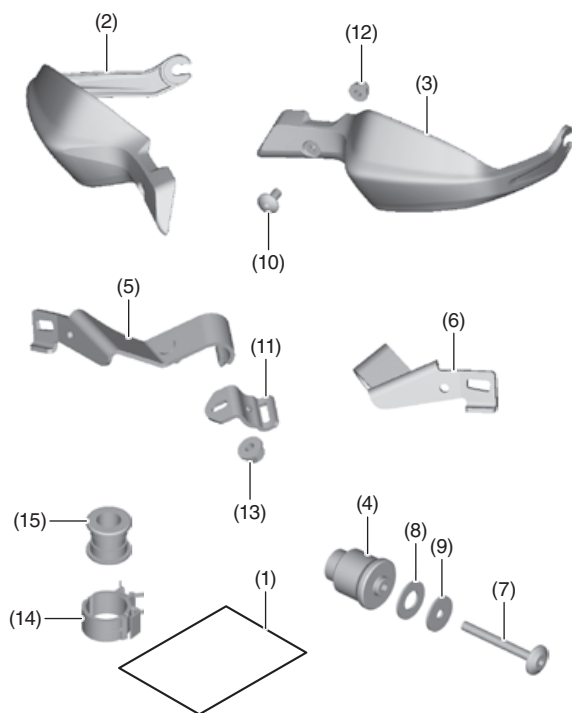
Accessory
KNUCKLE GUARD
P/N 08P70-MKA-D80

Application
NC750X/XD/XA

Publication No.
MII
Issue Date
September 2015

Honda Dealer: Please give a copy of these instructions to your customer.

PARTS LIST



No.	Description	Qty
(1)	URL paper	1
(2)	Right knuckle guard	1
(3)	Left knuckle guard	1
(4)	Steering handle weight	2
(5)	Right knuckle guard stay	1
(6)	Left knuckle guard stay	1
(7)	Socket bolt A (6 x 60 mm)	2
(8)	Rubber washer	2
(9)	Washer	2
(10)	Socket bolt B (6 x 14 mm)	2
(11)	Knuckle guard band	2
(12)	6 mm cap nut	2
(13)	6 mm U nut	2
(14)	Cable clip	1
(15)	Rubber mount	1

TOOLS REQUIRED

Box-end wrench (10 mm)
Hex wrench (5 mm)
Scissors
Torque wrench

TORQUE INFORMATION

Refer to the Service Manual for the torque values of the removed parts. Unless otherwise indicated, follow the specified torque in the chart.

Item	N-m	kgf-m	lbf-ft
6 mm socket bolt	10	1.0	7

INSTALLATION

⚠ CAUTION

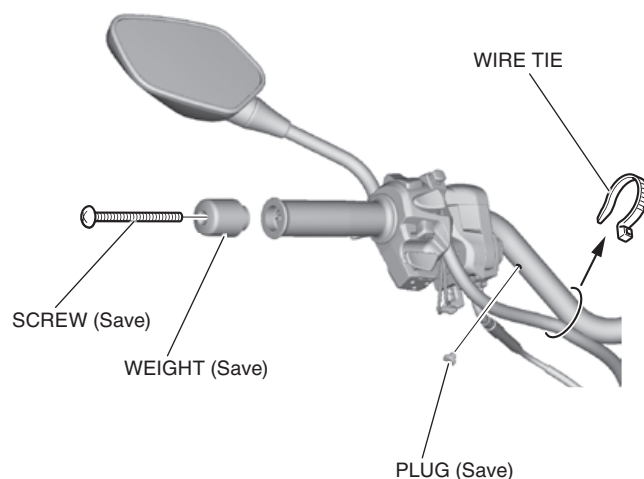
- To prevent burns, allow the engine, exhaust system, radiator, etc. to cool before installing the accessory.

NOTE:

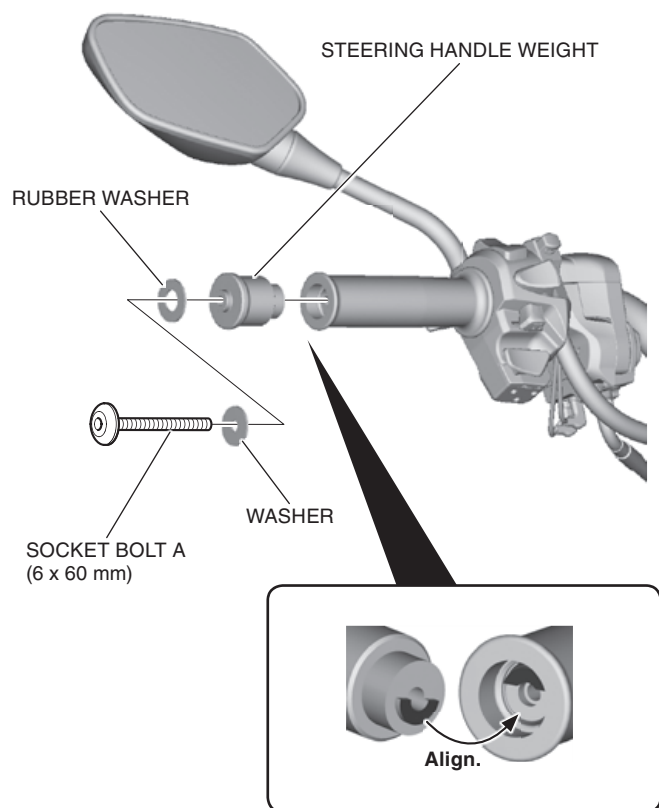
- This manual is focusing on NC750XD, but perform this work for other types. If there are any differences, each difference will describe in this manual.
- Be sure to open and close the throttle to check for smooth operation after installation of the right knuckle guard.
- Reinstall the removed parts on the motorcycle and make sure that the wires and harnesses are not pinched.

- Remove the steering handle weight, plug, and wire tie as shown.

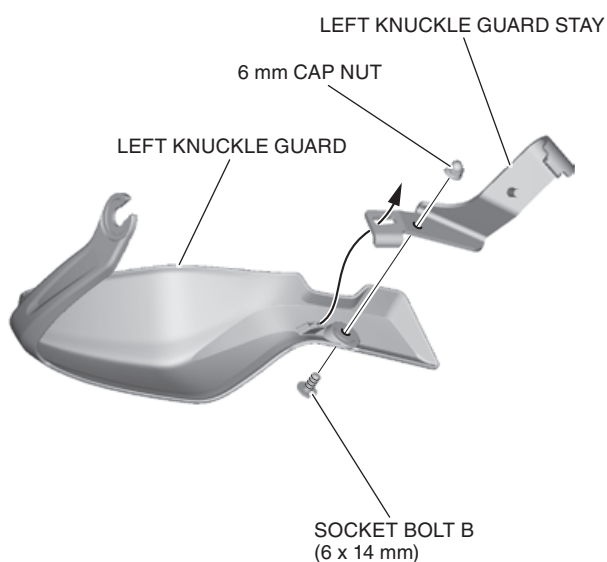
- Repeat on the right side.**



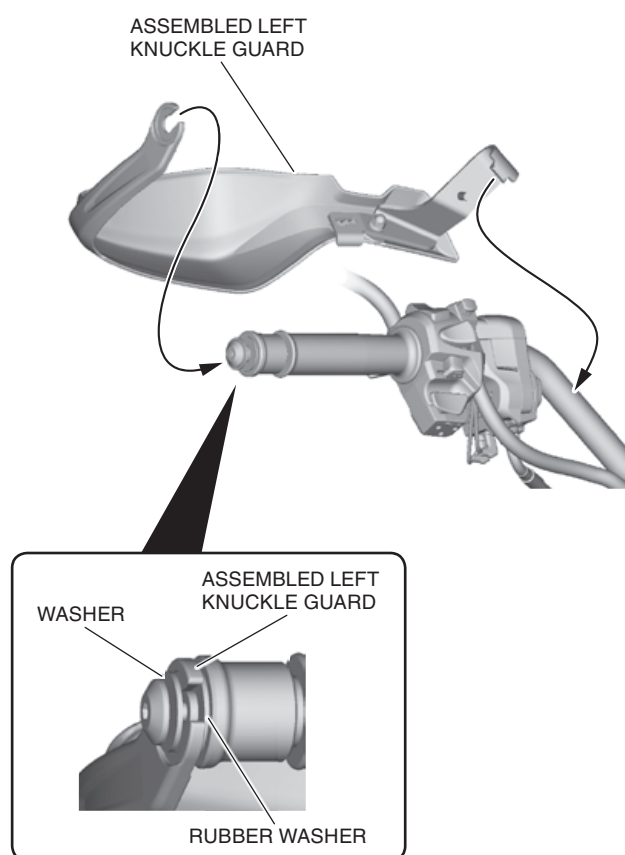
2. Loosely install the steering handle weight as shown.
- **Repeat on the right side.**



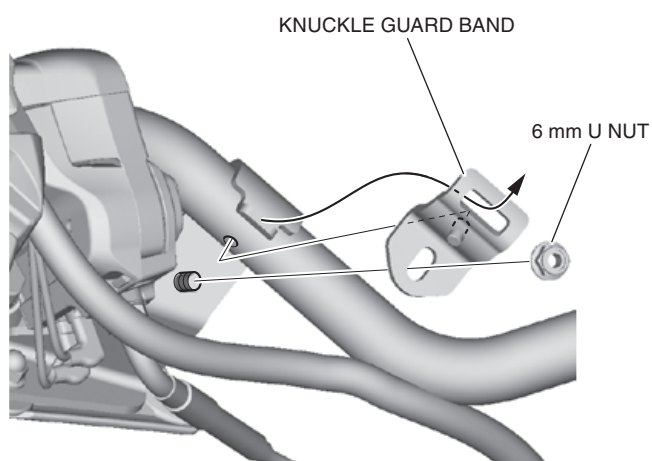
3. Install the left knuckle guard stay to the left knuckle guard as shown.
- **Repeat on the right side.**



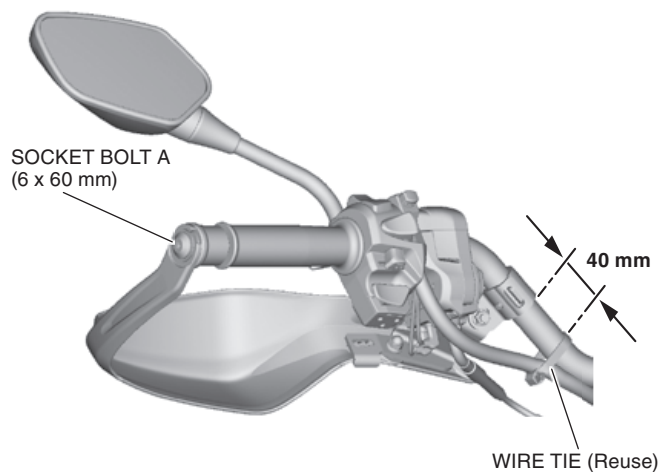
4. Install the assembled left knuckle guard as shown.
- **Repeat on the right side.**



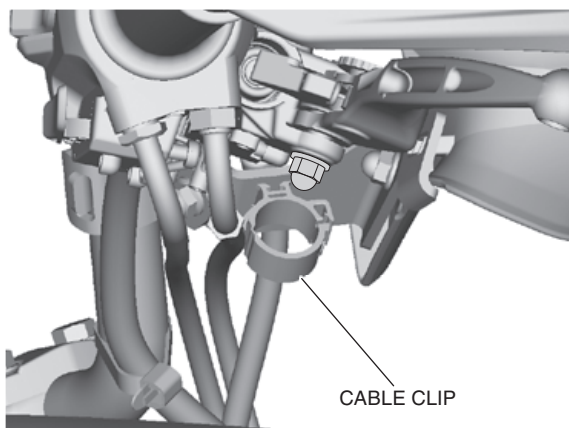
5. Install the knuckle guard band as shown.
- **Repeat on the right side.**



6. Install the wire tie in the dimension shown.
Tighten the socket bolt A (6 x 60 mm).
- **Repeat on the right side.**



7. <DCT type right side only>
Install the cable clip to the right knuckle guard stay
as shown.



8. <DCT type right side only>
Cut the rubber mount and set it on the throttle
cables.
9. Install the rubber mount into the cable clip as shown.
10. Clamp the cable clip.

