



INSTALLATION INSTRUCTIONS

Accessory

REAR CARRIER
P/N 08L74-K40-F70

Application

ADV350A

Publication No.

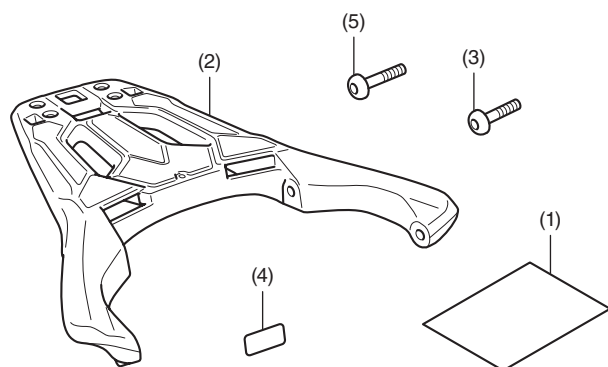
MII

Issue Date

November 2021

Honda Dealer: Please give a copy of these instructions to your customer.

PARTS LIST



No.	Description	Qty
(1)	URL paper	1
(2)	Rear carrier	1
(3)	10 mm socket bolt (short)	2
(4)	Label	1
(5)	10 mm socket bolt (long)	2

TOOLS AND SUPPLIES REQUIRED

Hex wrench (8 mm)

Isopropyl alcohol

Shop towel

Torque wrench

TORQUE CHART

Tighten all screws, bolts, and nuts to their specified torque values. Refer to the Service Manual for the torque values of the removed parts.

Item	N·m	kgf·m	lbf·ft
10 mm socket bolt	34	3.5	25

INSTALLATION

▲ CAUTION

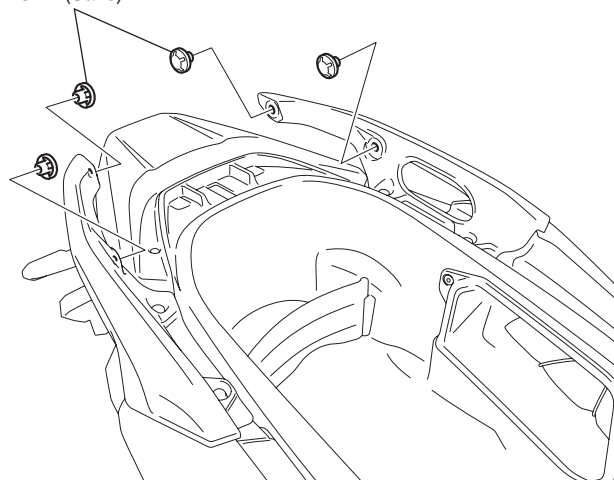
- To prevent burns, allow the engine, exhaust system, radiator, etc., to cool before installing the accessory.

NOTE:

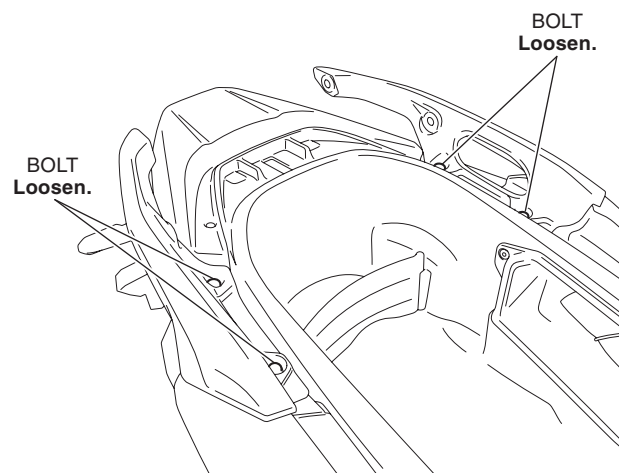
- Heat the bonding surfaces with a hair dryer if the ambient air temperature is below 70°F (21°C).
- The adhesive reaches full strength in 72 hours. Wait at least 24 hours before riding your motorcycle.

- Open the seat.
- Remove the caps as shown.

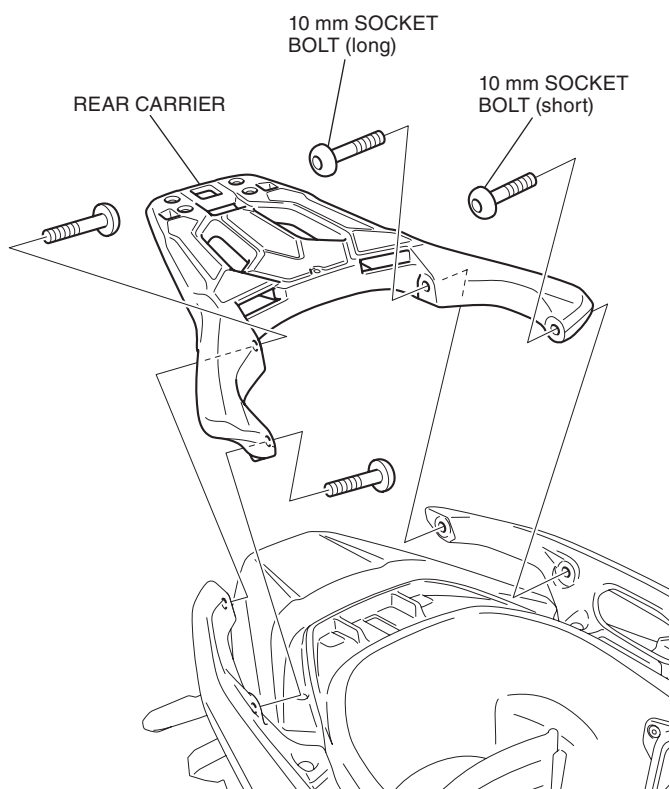
CAP (Save)



- Loosen the bolts as shown.

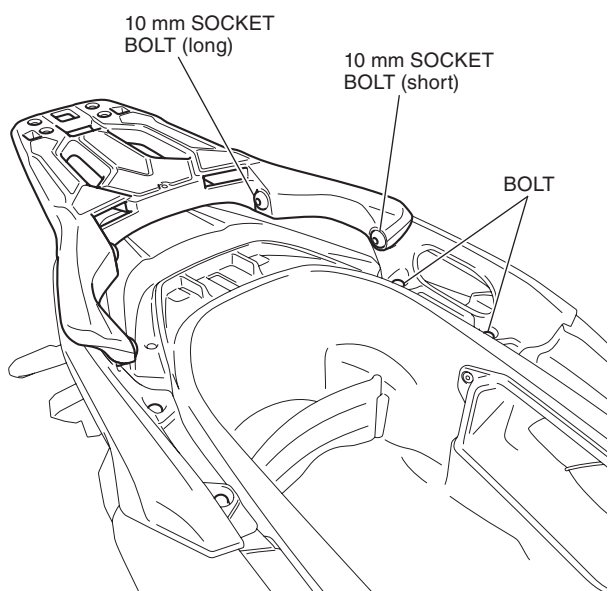


4. Loosely install the rear carrier as shown.

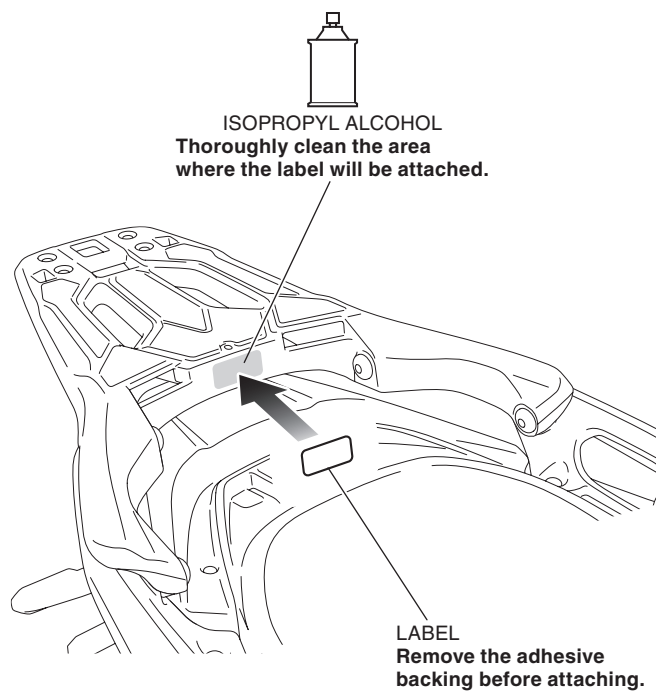


5. Tighten all loosely installed hardware to the specifications in the torque chart.

- **First tighten the 10 mm socket bolts, then tighten the bolts.**



6. Attach the label as shown.



7. Close the seat.