



INSTALLATION INSTRUCTIONS

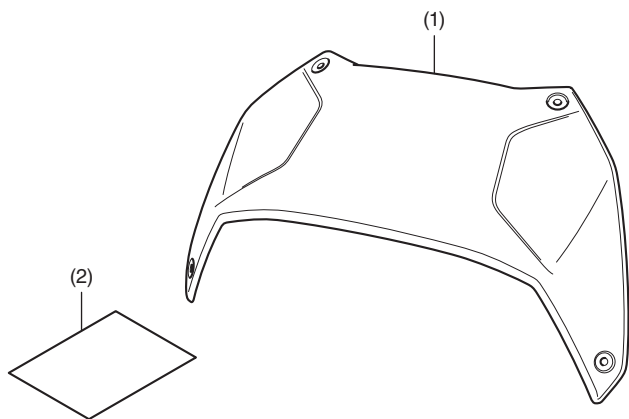
Accessory
TOP BOX PANEL (ALUMINUM)
P/N 08L83-MKT-D00

Application
ADV350A

Publication No.
MII
Issue Date
November 2021

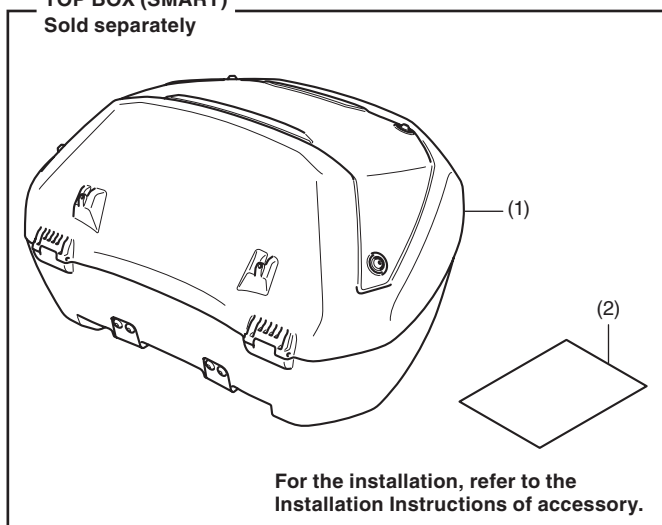
Honda Dealer: Please give a copy of these instructions to your customer.

PARTS LIST



No.	Description	Qty
(1)	Top box lid panel	1
(2)	URL paper	1

TOP BOX (SMART) Sold separately



No.	Description	Qty
(1)	Top box	1
(2)	URL paper	1

TOOLS AND SUPPLIES REQUIRED

Hex wrench (3 mm)
Isopropyl alcohol
Shop towel
Torque wrench

TORQUE CHART

Tighten all screws, bolts, and nuts to their specified torque values. Refer to the Service Manual for the torque values of the removed parts.

Item	N·m	kgf·m	lbf·ft
Screw	4.2	0.4	3.1

INSTALLATION

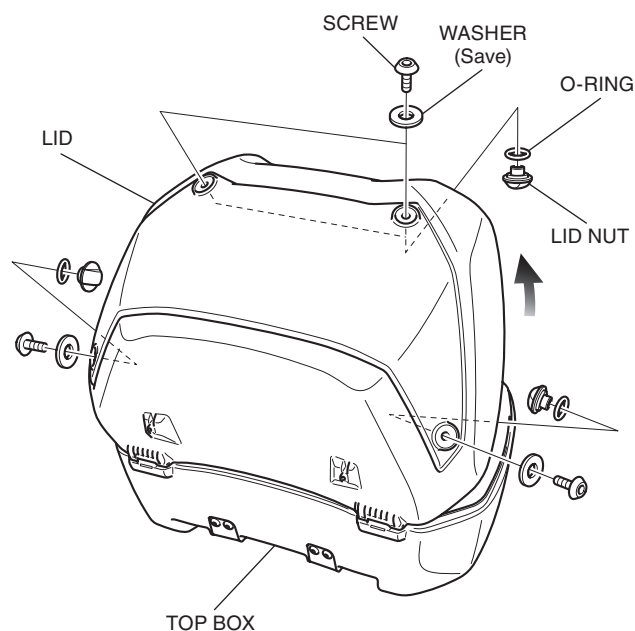
▲ CAUTION

- To prevent burns, allow the engine, exhaust system, radiator, etc., to cool before installing the accessory.

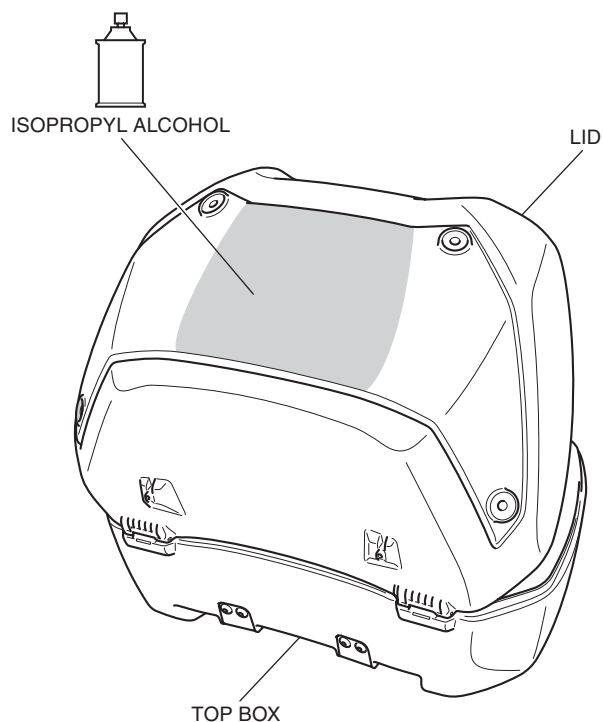
NOTE:

- Heat the bonding surfaces with a hair dryer if the ambient air temperature is below 70°F (21°C).
- The adhesive reaches full strength in 72 hours. Wait at least 24 hours before riding your motorcycle.

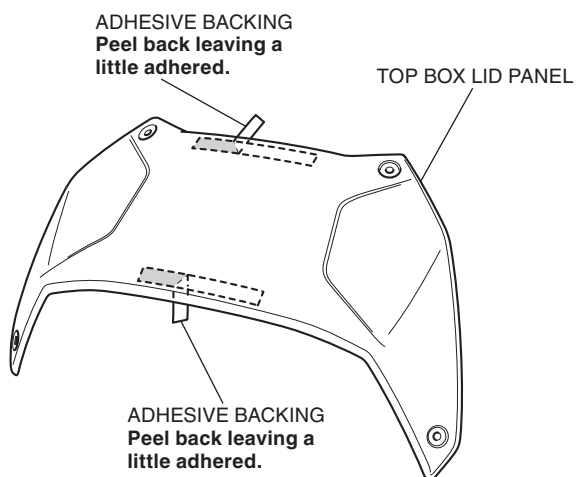
1. Open the lid, then remove the parts as shown.



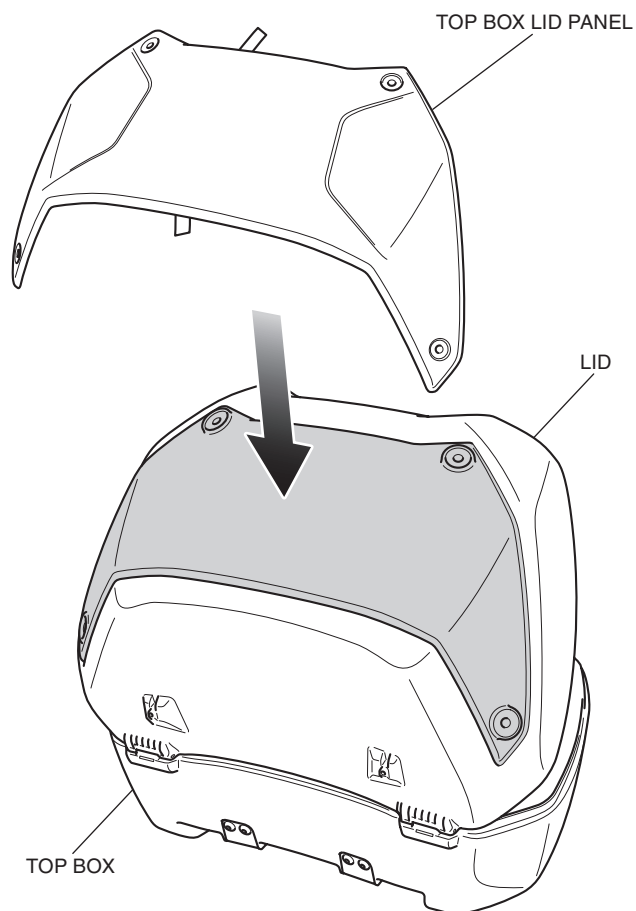
2. Clean the surface of the area shown using an isopropyl alcohol.



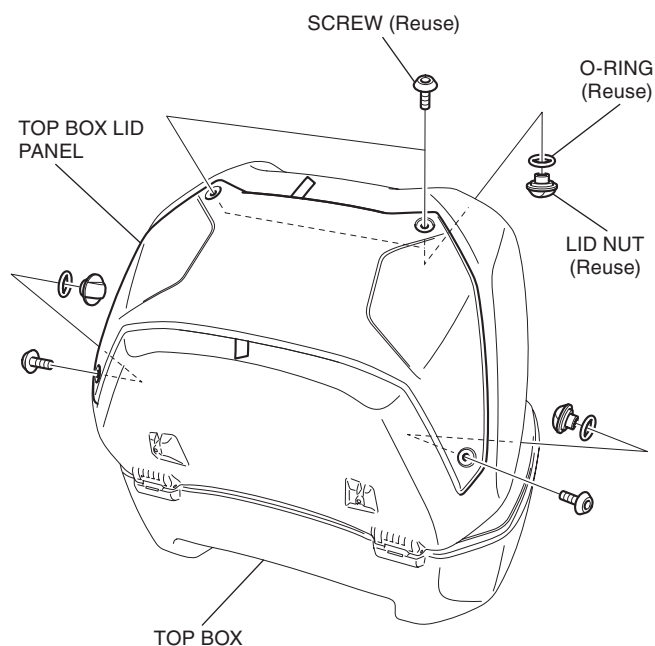
3. Peel off the adhesive backings on the rear of the top box lid panel as shown.



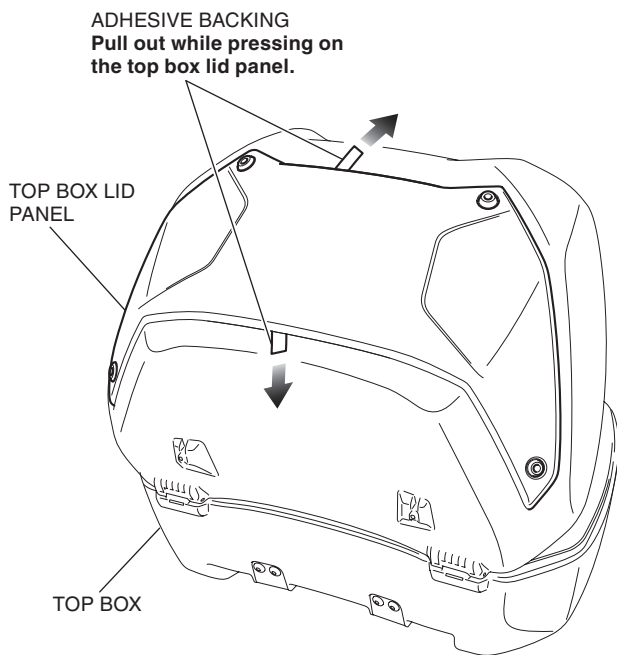
4. Attach the top box lid panel as shown.
- Align the top box lid panel with the shape of the lid.



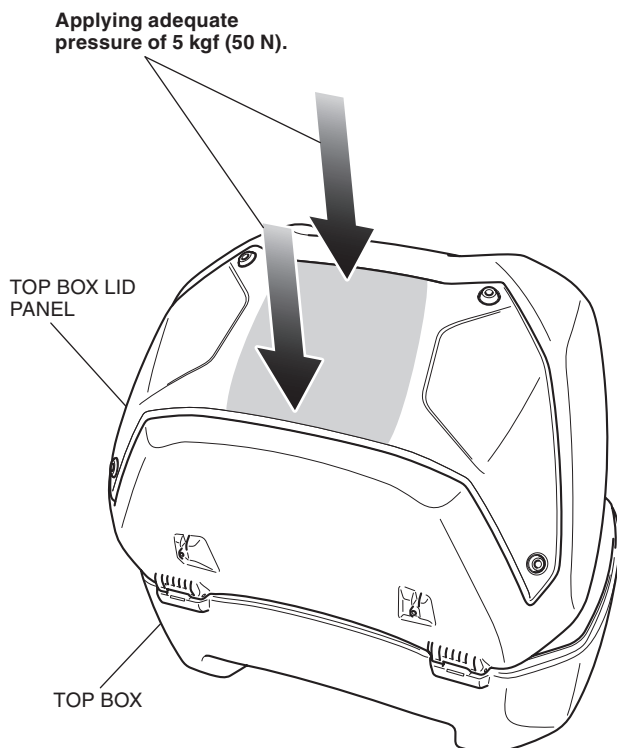
5. Loosely install the parts as shown.
- If there is a misalignment, start over from step 4.



6. Remove the adhesive backings while pressing on the top box lid panel firmly with the palm.



7. Applying adequate pressure of 5 kgf (50 N) to the attached top box lid panel.
- **Make sure to crimp with a force of 5 kgf (50 N).**



8. Leave the top box lid panel for 10 minutes to stabilize the fitting of the adhesive surface.

9. Tighten all the loosely installed hardware to the specifications in the torque chart.

- **At the moment of tightening every parts, push the top box lid panel on the indicated areas in the indicated directions.**

